

Wireless Printing

INSTRUCTIONS: How to Install the Wireless Pay-To-Print Drivers on Your Laptop Computer.

Select the printer in which you wish to send print jobs to from the list of printers listed.

[A102 Computer Cafe](#)

Link: http://www.sarasota.usf.edu/CampusComputing/pharos/SMC_A102.exe

[A210 L Room Lab](#)

Link: http://www.sarasota.usf.edu/CampusComputing/pharos/SMC_A210.exe

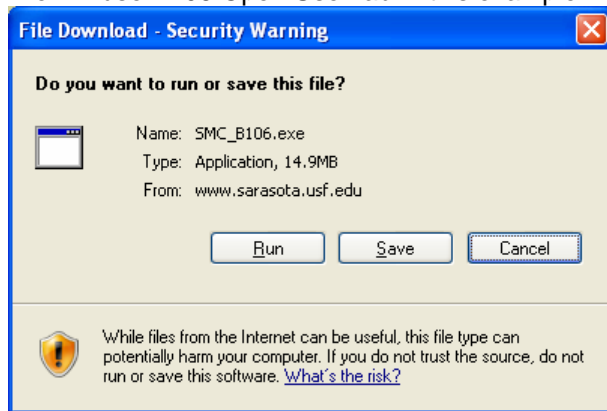
[B106 Open Use Lab](#)

Link: http://www.sarasota.usf.edu/CampusComputing/pharos/SMC_B106.exe

[C203 Information Commons](#)

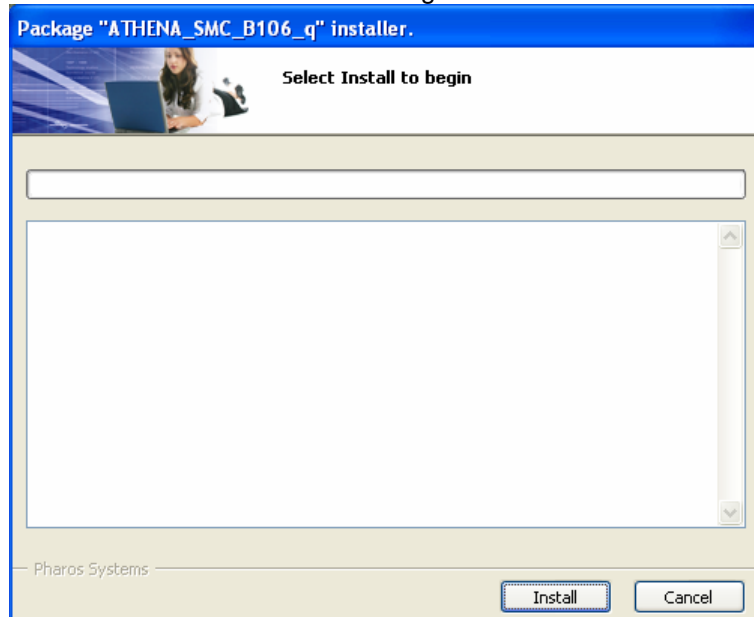
Link: http://www.sarasota.usf.edu/CampusComputing/pharos/SMC_C203.exe

Click on the printer name (link above) and select RUN from the following window.
We will use B106 Open Use Lab in this example.

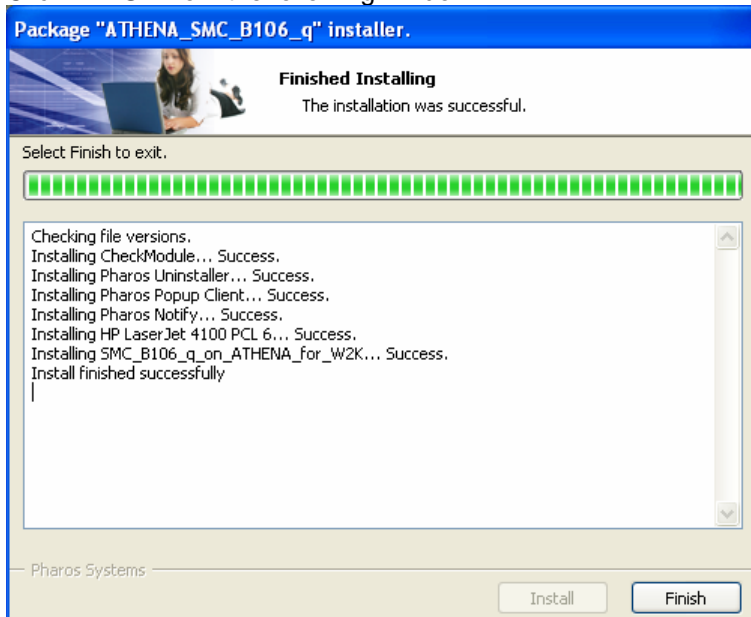


If you see a Security Warning window pop up here, select RUN again from the warning window.

Click on INSTALL from the following window.



Click FINISH from the following window.



Once you have finished these steps you are ready to print to the selected printer.

Click START then click Printers and Faxes

There is now another printer installed called SMC_B106_B&W in this case. This is the Pay-to-Print printer you just installed. From your program, when ready to print you will need to select FILE then PRINT and select this printer. You will see the pharos pop up which asks you to input a name. This name is the designation you will use to locate your printer at the Pay-to-Print release station used to pay for your print job.

If you need to print from other SMC building locations, you can go through the above process for the other printers required.

IMPORTANT INFORMATION:

PRINTING PROCEDURES FOR PAY-TO-PRINT PRINTERS:

All printing will be through the PHAROS pay-for-print system that has been in place at USF for 5 years. Black and White prints will be \$.11 per sheet. For color prints please see the attendant in the Copy Center in B124 between the hours of 8:30 AM and 5:00 PM for more information.

Pay-for-Print stations are available in the following SMC locations:

- A102 Computer Cafe
- A210 L Study/Lab Area
- B106 Open Use Computer Lab
- C203 Information Commons

For more information on the USFCard as well as VENDCards, please refer to the trifold pamphlet titled "Public, Self-Service Copiers & Printers At USF Sarasota-Manatee Campus SMC Building". You may access this pamphlet at the following link:

http://www.sarasota.usf.edu/CampusComputing/Documents/Trifold_Vend_Cards.pdf

REFUNDS:

There will be NO form of refunds for the Pay-for-Printing solution. If a student prints out the wrong material or too many pages they will not be provided a refund or reprint.

There are several forms of checks built into the system for students to check.

1. Selecting the appropriate data to print
2. Using the Print preview command on the computers to see what will print
3. Once the print job is sent to the print release station it will display # of pages as well as final cost of the print job

Once the student has submitted the job to print from the printer release station they are responsible for the prints that come out.

If you have questions about any of the above information, please see the lab attendant on duty in the computer lab B106.